

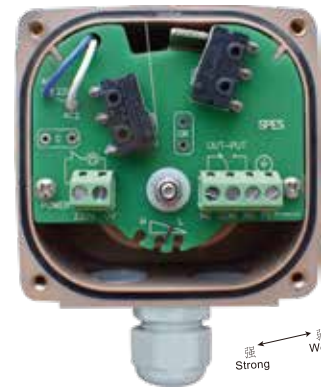
工作原理 Working Principle

利用电机带动叶片旋转,当被测介质上升到叶片位置时,叶片受介质阻挡停止转动从而通过相关控制机构输出开(通)或关(断)的触点信号;介质下降离开叶片时,在弹簧的作用下,叶片恢复原位继续转动探测介质的位置变化。

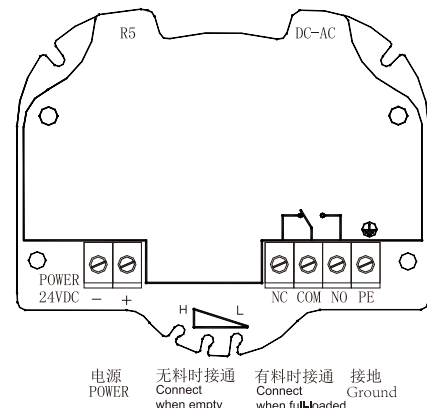
The motor is used to drive the blade to rotate. When the measured medium rises to the blade position, the blade stops rotating by dielectric barrier and outputs contact signal ON or OFF through the relevant control mechanism; when the medium drops away from the blade, the blade restores to the beginning position to rotate and detect the position change of the medium under the function of spring.

特点 Features

- ◆检测散装固体物料的旋转叶片式开关技术
- ◆高度集成的机械密封,可防止粉尘沿轴渗入
- ◆独特的弹性离合器结构,叶片过载时,自动保护电机
- ◆完全的机电分离式结构,整体免拆卸易维护
- ◆特殊叶片可用于低密度物料
- ◆使用过程连接件,安装简单
- ◆ Detection of loose solid materials with rotating blade technology
- ◆ Highly integrated mechanical seal to prevent the filtration of dust along the shaft
- ◆ Unique flexible clutch structure to conduct automatic protection of the motor when blade is overloaded
- ◆ Separate mechanical and electrical structure for simple maintenance without disassembly
- ◆ Special blades for low-density mediums
- ◆ Process connection pieces for easy installation



灵敏度调节
Sensitivity Adjustment





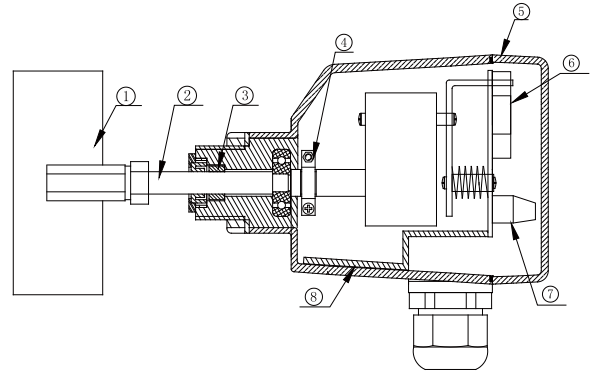
阻旋式料位开关 Rotary Paddle Type Level Switch

技术参数 Technical Specification

电源电压：标准型：220VAC（110VAC、24VAC、24VDC）
 触点容量：250VAC/5A（阻性负载），SPDT（单刀双掷）
 工作温度：-10—80℃（普通高温型最高可达200℃
 特殊订制高温型最高可达800℃）
 功率：3W
 旋转力矩：1N·m
 叶片转速：1rpm
 叶片材质：SUS304
 防护等级：IP65
 出线口：M20×1.5
 适用物料比重：≥0.49/cm³

Power Supply: Standard: 220VAC (110VAC, 24VAC, 24VDC)
Contact Capacity: 250VAC/5A (Resistive Load), SPDT
Working Temperature: -10-80℃ (Normal high temperature up to 200℃, Special high temperature up to max 800℃)
Power: 3W
Rotating Torque: 1N.m
Blade Rotating Speed: 1rpm
Blade Material: SUS304
Protection Grade: IP65
Wire Outlet: M20×1.5
Proportion of the Applicable Medium: ≥0.4g/cm³

技术参数 Technical Specification



- | | |
|-------------------------------|--------------------------|
| 1、叶片
Blade | 5、外壳
Shell |
| 2、转动轴
Drive Shaft | 6、微动开关
Micro Switch |
| 3、密封结构组件
Sealed Components | 7、接线端子
Terminal Block |
| 4、离合器
Clutch | 8、挡板
Baffle |

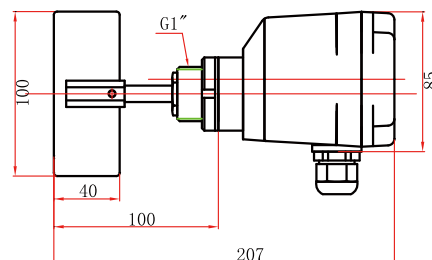
SR5-10S

标准螺纹型
(可水平或垂直安装)



Standard Screw Type

(Vertical or Horizontal Installation)



SR5-20F-T

标准螺纹型
(可水平或垂直安装)

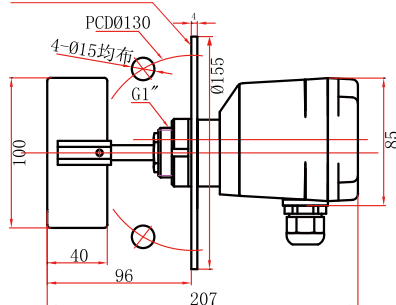


Standard Flange Type

Vertical or Horizontal Installation

Flange Size

法兰规格: JIS 2-1/2"X5kg/cm²



SR5-20F-L

直杆加长型
(仅限垂直安装)

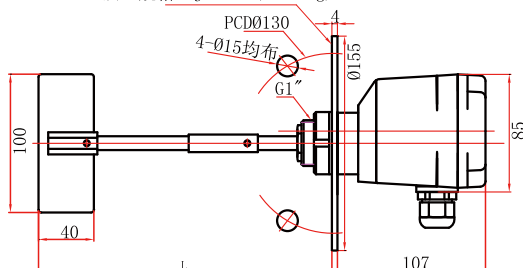


Extended Straight Shaft Type

Only for Vertical Installation

Flange Size

法兰规格: JIS 2-1/2"X5kg/cm²



SR5-20F

轴保护管型
(可水平或垂直安装)



Shaft Protection Tube Type

Vertical or Horizontal Installation

Flange Size

法兰规格: JIS 2-1/2"X5kg/cm²

